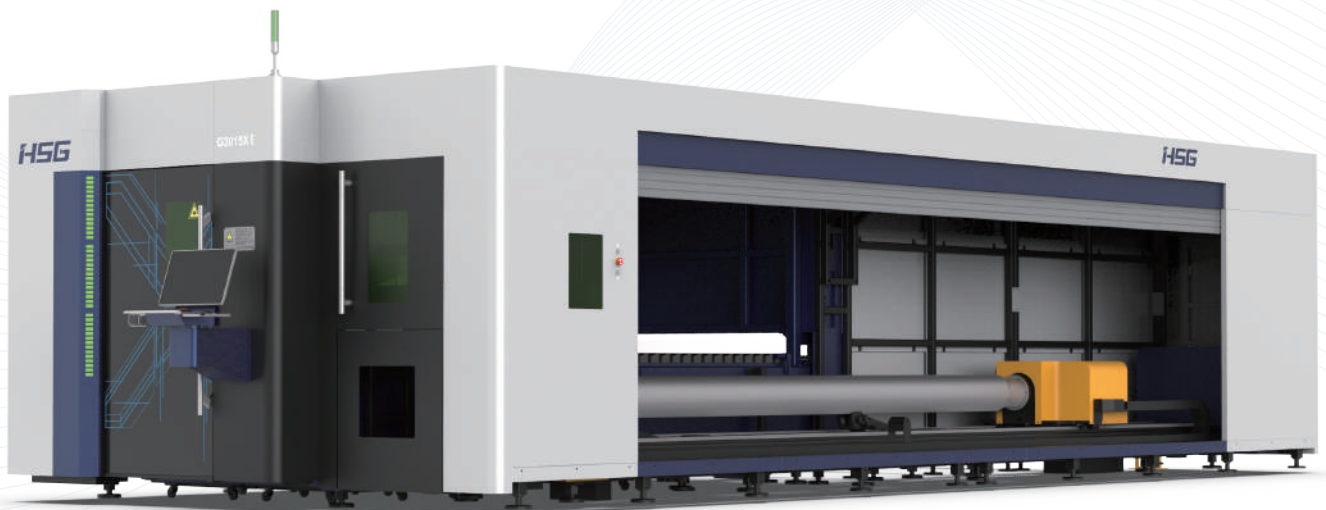




Cutting | Bending | Welding | Automation



GXE-QBW

✦ Double Exchange Platforms Sheet & Tube Laser Cutting Machine ✦

Company Culture



MISSION

Intelligent manufacturing changes future



VALUES

Customer-focused and employee-based



VISION

Become a respectable enterprise in the global metal forming equipment field

Company Profile



19

Global Branches



100+

Countries Covered



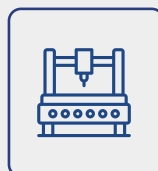
5

Manufacturing Bases



30+

Global Service Centers



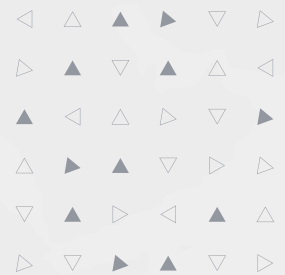
8,000+

Annual Capability



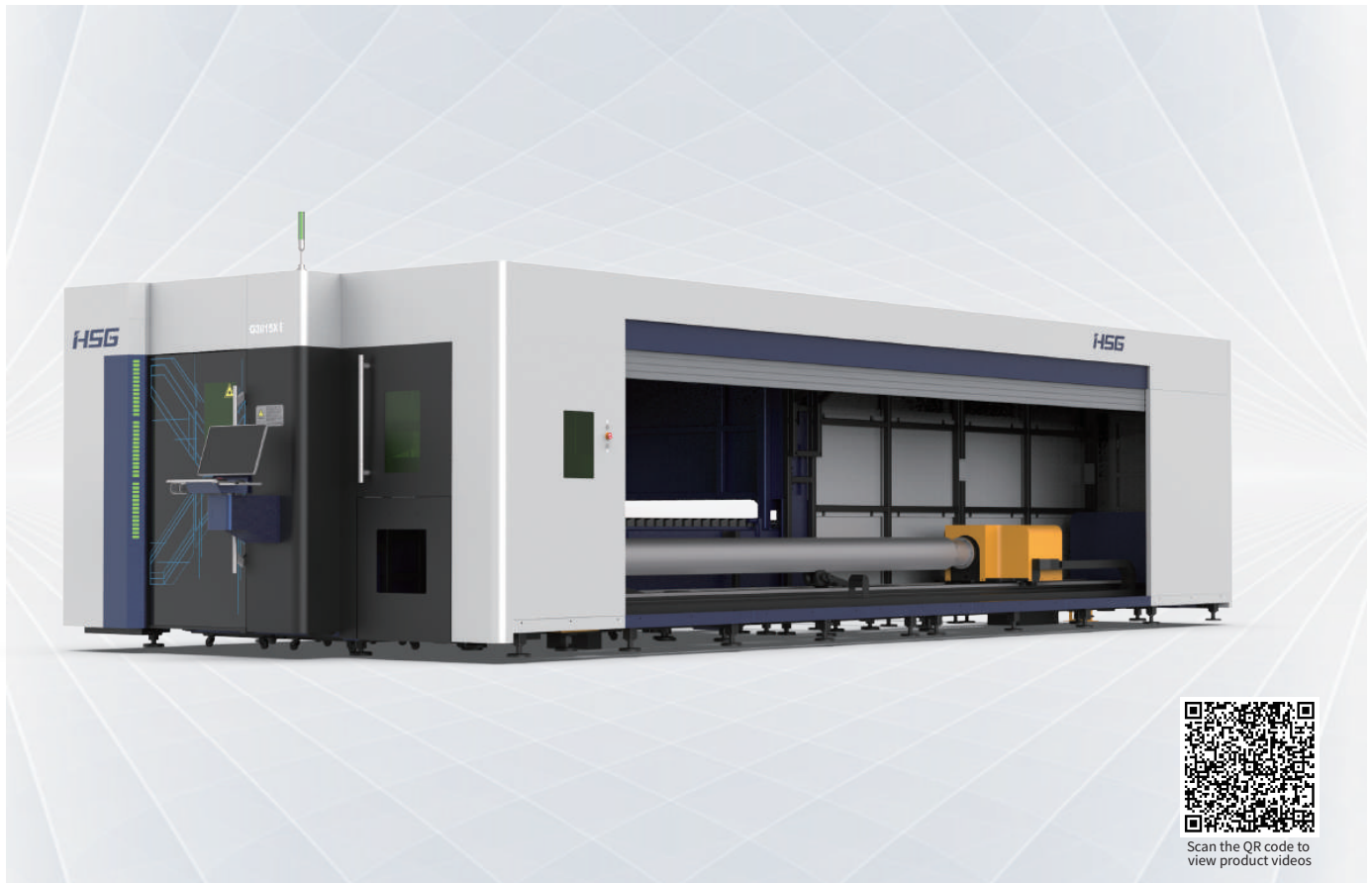
135,000m²

Occupied Area



GXE-QBW 1500-6000W

Double Exchange Platforms Sheet & Tube Laser Cutting Machine



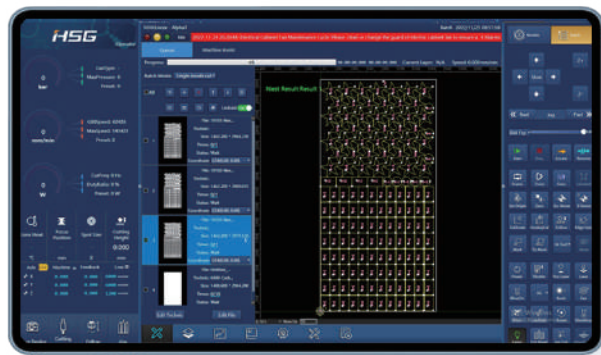
Technical Parameters

Technical Parameters	G3015XE
Power	1500W-6000W
Processing format (L*W)	3048mm*1524mm
X/Y-axis positioning accuracy	$\pm 0.03\text{mm/m}$
X/Y-axis repositioning accuracy	$\pm 0.03\text{mm}$
Max. Linkage Acceleration	0.5G
Max. Linkage Speed	60m/min

* Machine appearance, technical parameters, function description, data comparison shown in this page are from HSG in-house laboratory. All testing results and experimental data shall be subject to real machine.

HSG Bus-based Control System

- This system is easy to be operated and rich in functions.
- Even green hands can cut high-quality samples.
- Monitor core components in real time.
- Millisecond-level follow-up response technology.
- Click to create processing report.
- Compatible with codes of international brands.

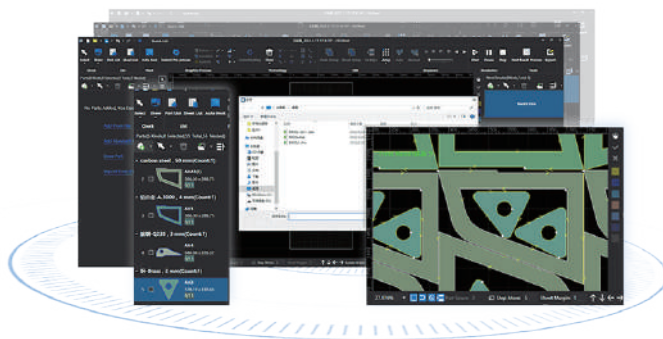


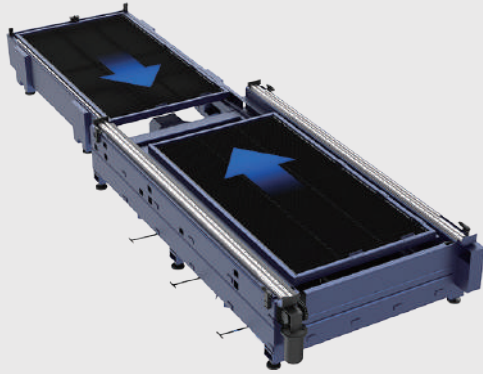
Automatic Focus Cutting Head

- Autofocus Laser Cutting Head
The cutting head can adjust its focus according to laser beam mode to make sure of mirror-like surface.
- Servo autofocus system
- Automatic cooling and obstacle avoidance
- Three built-in protective lens
- Anti-pollution design
- Give early warning if abnormal

Professional Nesting Software (Optional)

- No matter sheet cutting or tube cutting, it is equipped with professional nesting software to optimize cutting track and improve efficiency.



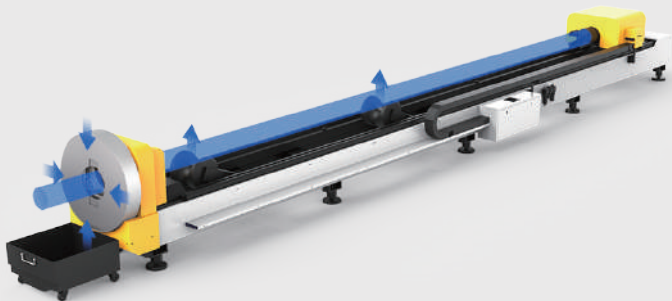


Exchange Platforms

- Achieve the cutting operation and loading and unloading synchronization.
- Before the switching motor, the rear workbench loading and unloading space is sufficient.
- The sheet metal cover is safe from damage.

Tube Splicing Technology

- The operating control offers 50+ kinds of tube splicing patterns, for convenience of subsequent welding, such as splicing of male and female head of square tube, 90° arc splicing, splicing of round tube tee, splicing of cut-through holes, 45° splicing of hexagon, splicing of angle iron and channel steel, etc.

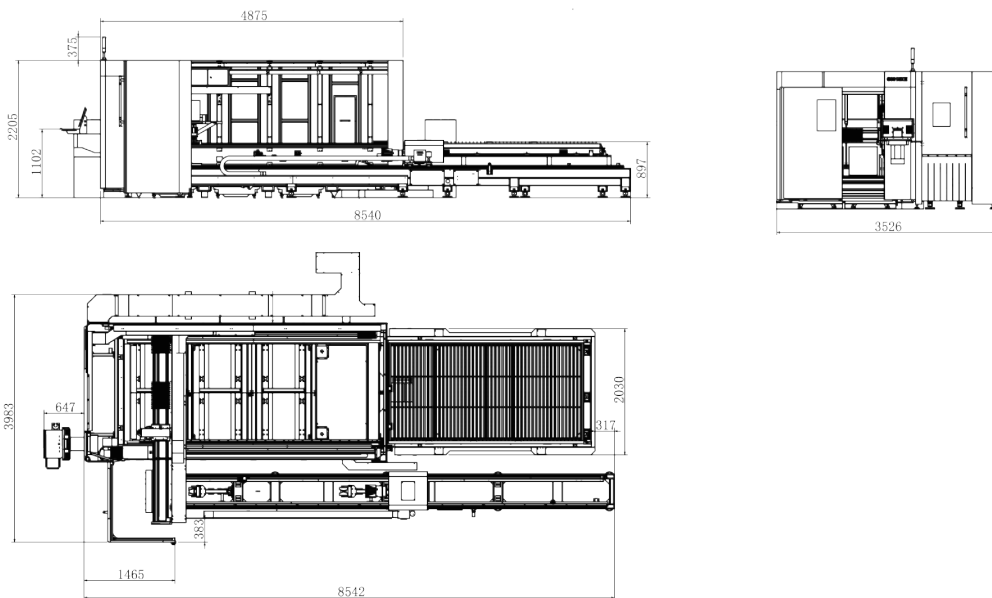


Automatic Pneumatic Double Chucks

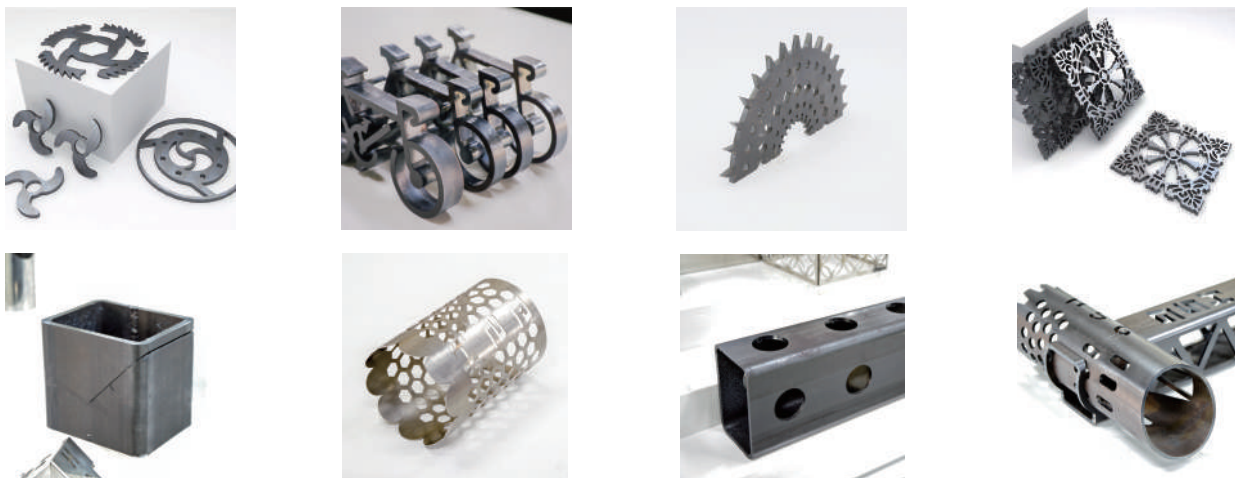
- Automatic centering the chucks.
- Pneumatic chuck clamping with large clamping force.
- Special support frame to avoid tube sagging deformation.



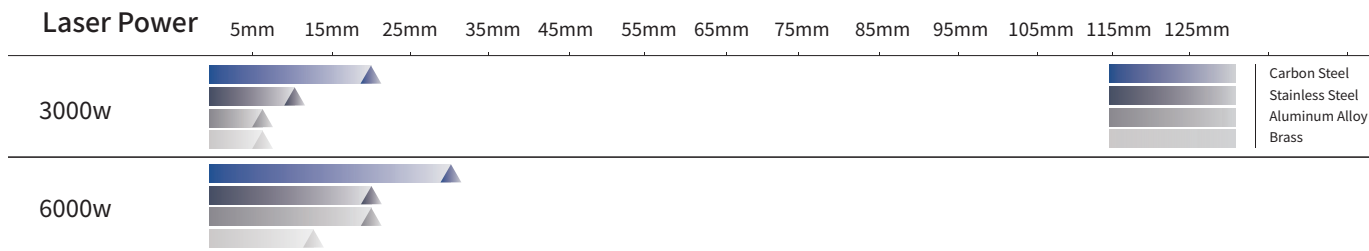
Machine Foundation *The marked size has about 10mm error



Cutting Samples



Cutting Capacity



The actual machines shall prevail and above data & pictures are only for reference.



Intelligent Manufacturing Changes Future



As a global enterprise, HSG sticks to providing professional and convenient service support to customers at home and board



Professional Training

Multiple technical training services and free operation training are provided for customers and dealers in a timely manner.



Efficient Support

Humanistic service model, online services and 7*24 hotline to offer solutions and assistance.



Optimized Transport

Multi-channel transport solutions and a professional transport solution team providing various transport cases to satisfy the demand of customers and save transportation fees.



Sufficient Accessories

Highly efficient accessory delivery service; multiple network inventories jointly respond to accessory demand, shortening customers' waiting times and accelerating production.



Careful Services

Domestic door-to-door service and free proofing, with over 100+ dealers providing efficient and convenient services.



Intelligent Manufacturing Changes Future



Website



Facebook



Youtube

Headquarters Add.: No. 4, Anye Road, Shunjiang Community Industrial Park,
Beijiao Town, Shunde District, Foshan, Guangdong, China
Website: www.hsglaser.com
Email: info@hsglaser.com
Tel: +86 757-66833906